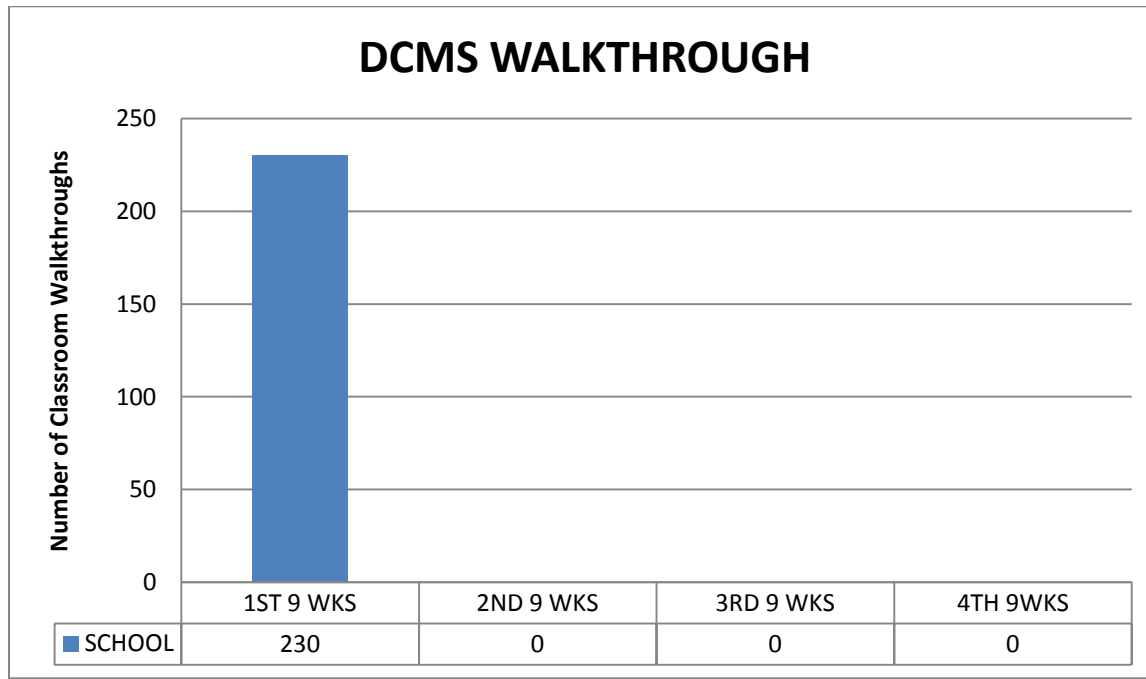


DATA MEASUREMENT SAMPLES

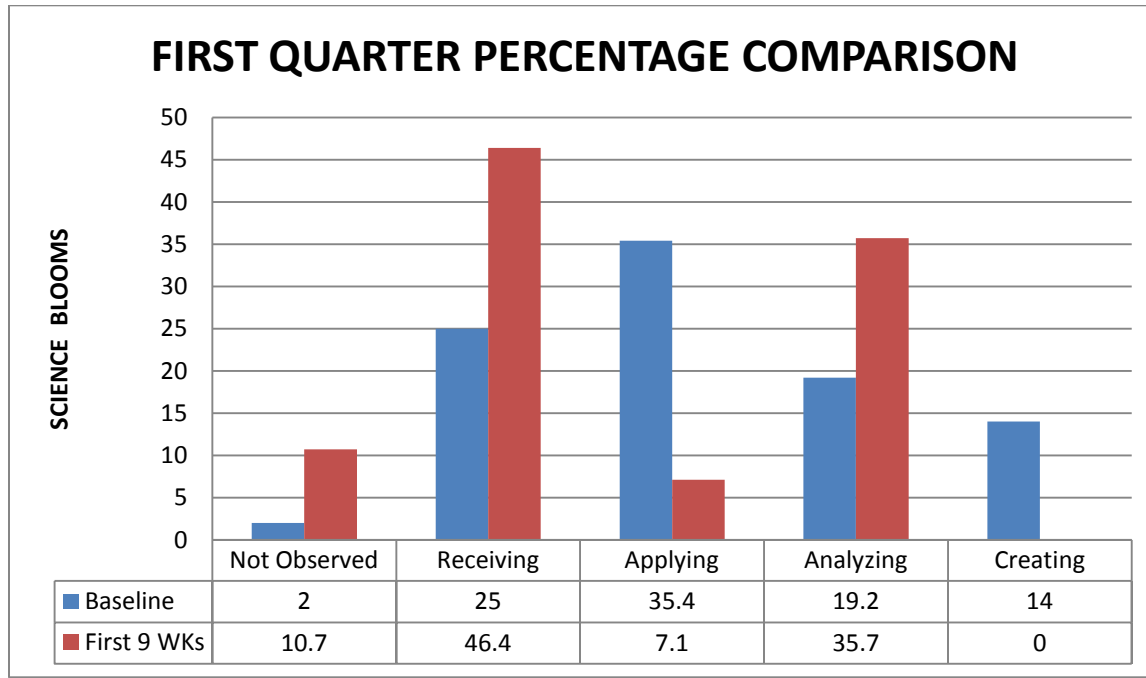
Department Walkthrough Goals

- The science department will increase the DOK "Creation" level by 5% by the end of the first semester of the 2014 - 15 school year. Last Year = 10.3% to Target = 14.20%
- The ELA department, we will increase the DOK level of analyzing/evaluating and creating by 5% by the end of the first semester of the 2014 - 15 school year. 8.8% to Target = 9.24%
- The math department, we will increase academic engagement by 12% by the end of the first semester of the 2014 - 15 school year. 71.6% Target = 80.19%
- The 2^{1st} Century department will increase the percentage of time stating the objective at beginning of class by 10% and share out the objective during mid lesson and closure by 10% at the end of the first semester of the 2014 - 15 school year. 29% to Target = 31.9%
- The social studies department will increase academic engagement from 42% to 80% by the end of the first semester of the 2014-2015 school year. 42 % to Target = 80% (38% increase)
- The PE department will increase academically engagement from 83% to 86% by the end of the first semester. 83 % to Target = 86% (Increase by 3%)

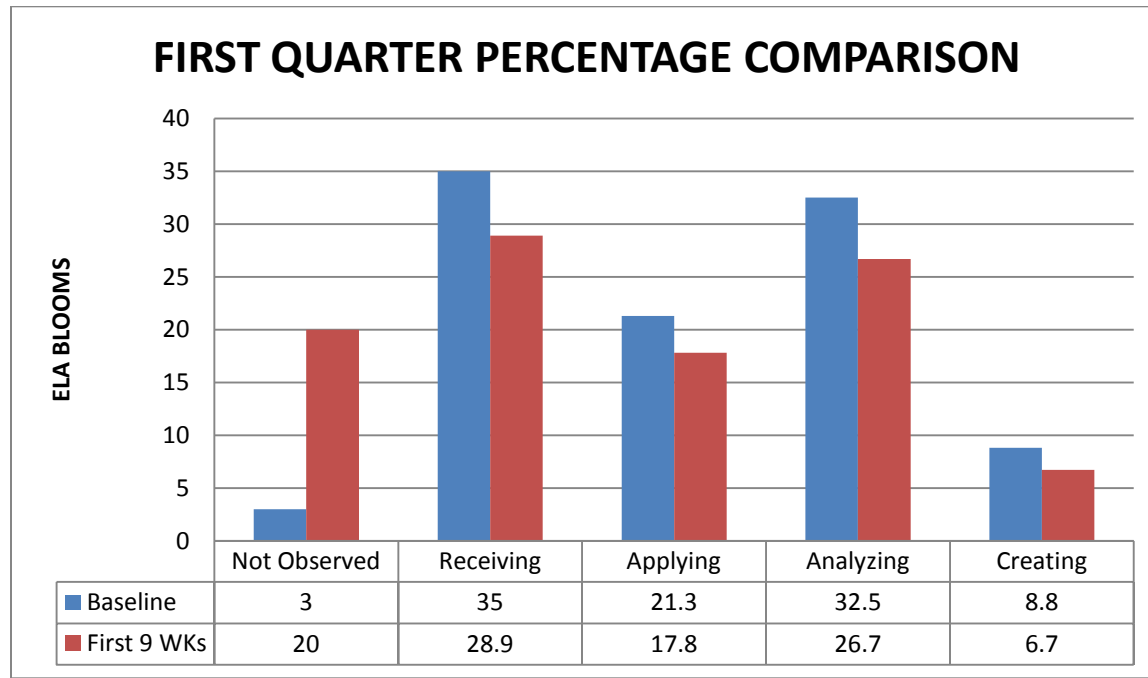


WALKTHROUGH DEPARTMENT DATA

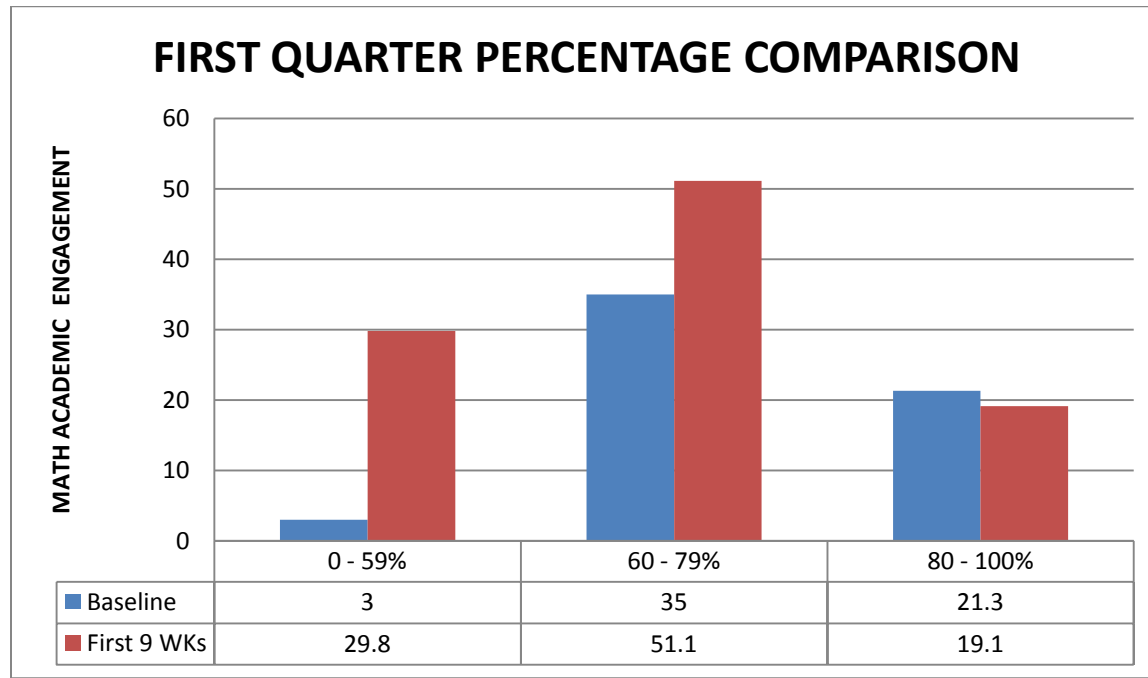
The science department will increase the DOK “Creation” level by 5% by the end of the first semester of the 2014 - 15 school year.
 Last Year = 10.3% to Target = 14.20%



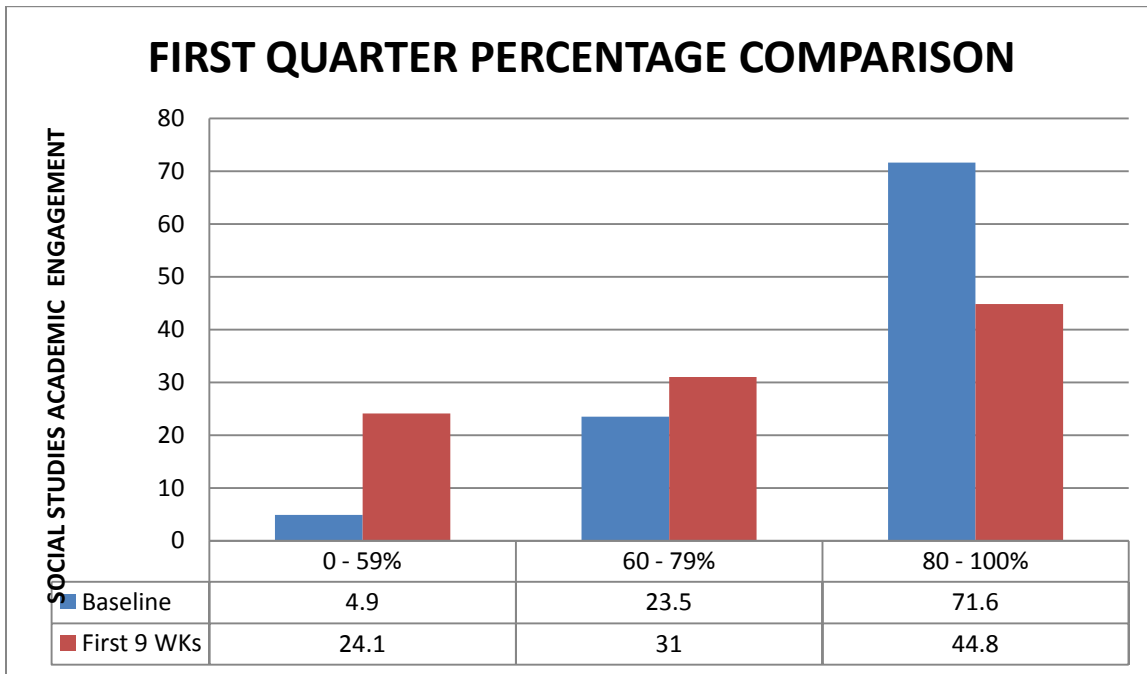
The ELA department, we will increase the DOK level of analyzing/evaluating and creating by 5% by the end of the first semester of the 2014 - 15 school year. 8.8% to Target = 9.24%



The math department, we will increase academic engagement by 12% by the end of the first semester of the 2014 - 15 school year.
 71.6% Target = 80.19%



The social studies department will increase academic engagement from 42% to 80% by the end of the first semester of the 2014-2015 school year. 42 % to Target = 80% (38% increase)



STUDENT READING INVENTORY GRADE 8 ALL STARS

Performance Level	Points per Test	# of Tests	Total Points
Exemplary 1300 -1000	1000	24	24,000
Exceeds Standards 1186-1299	750	41	30,750
Meets Standards 1010-1185	500	26	13,000
Approaching 751-1009	250	9	2,250
Academic Warning BR-750	0	3	-
Totals		103	70,000
DCMS LEXILE API FALL 2014			
Assessments Performance Index =	680		

STUDENT READING INVENTORY GRADE 8 DEFENDERS

Performance Level	Points per Test	# of Tests	Total Points
Exemplary 1300 -1000	1000	7	7,000
Exceeds Standards 1186-1299	750	9	6,750
Meets Standards 1010-1185	500	28	14,000
Approaching 751-1009	250	39	9,750
Academic Warning BR-750	0	25	-
Totals		108	37,500
DCMS LEXILE API FALL 2014			
Assessments Performance Index =	347		

STUDENT READING INVENTORY GRADE 7 ODYSSEY

Performance Level	Points per Test	# of Tests	Total Points
Exemplary 1171	1000	19	19,000
Exceeds Standards 1121-1170	750	57	42,750
Meets Standards 970-1120	500	28	14,000
Approaching 601-969	250	5	1,250
Academic Warning BR-600	0	6	-
Totals		115	77,000
DCMS LEXILE API FALL 2014			
Assessments Performance Index =	670		

STUDENT READING INVENTORY GRADE 7 VOYAGERS

Performance Level	Points per Test	# of Tests	Total Points
Exemplary 1171	1000	16	16,000
Exceeds Standards 1121-1170	750	57	42,750
Meets Standards 970-1120	500	16	8,000
Approaching 601-969	250	6	1,500
Academic Warning BR-600	0	-	-
Totals		95	68,250
DCMS LEXILE API FALL 2014			
Assessments Performance Index =	718		

STUDENT READING INVENTORY GRADE 6 SPARTANS

Performance Level	Points per Test	# of Tests	Total Points
Exemplary 1201	1000	23	23,000
Exceeds Standards 1071-1200	750	66	49,500
Meets Standards 925-1070	500	20	10,000
Approaching 521-924	250	9	2,250
Academic Warning BR - 520	0	-	-
Totals		118	84,750
DCMS LEXILE API FALL 2014			
Assessments Performance Index =	718		

STUDENT READING INVENTORY GRADE 6 OLYMPIANS

Performance Level	Points per Test	# of Tests	Total Points
Exemplary 1201	1000	36	36,000
Exceeds Standards 1071-1200	750	72	54,000
Meets Standards 925-1070	500	14	7,000
Approaching 521-924	250	7	1,750
Academic Warning BR - 520	0	1	-
Totals		130	98,750
DCMS LEXILE API FALL 2014			
Assessments Performance Index =	760		

STUDENT MATH INVENTORY GRADE 8 ALL STARS

Performance Level	Points per Test	# of Tests	Total Points
Exemplary 1260 -	1000	-	-
Exceeds Standards 1106-1259	750	2	1,500
Meets Standards 956-1105	500	11	5,500
Approaching 855-955	250	14	3,500
Academic Warning EM 400- 854	0	75	-
Totals		102	10,500
DCMS MATH API FALL 2014			
Assessments Performance Index =	103		

STUDENT MATH INVENTORY GRADE 8 DEFENDERS

Performance Level	Points per Test	# of Tests	Total Points
Exemplary 1260 -	1000	-	-
Exceeds Standards 1106-1259	750	5	
Meets Standards 956-1105	500	7	3,500
Approaching 855-955	250	10	2,500
Academic Warning EM 400- 854	0	84	-
Totals		106	6,000
DCMS MATH API FALL 2014			
Assessments Performance Index =	57		

STUDENT MATH INVENTORY GRADE 7 ODYSSEY

Performance Level	Points per Test	# of Tests	Total Points
Exemplary 1180- HIGHER	1000	-	-
Exceeds Standards 1106-1179	750	1	750
Meets Standards 896-1105	500	9	4,500
Approaching 775-895	250	26	6,500
Academic Warning EM400-774	0	78	-
Totals		114	11,750
DCMS MATH API FALL 2014			
Assessments Performance Index =	103		

STUDENT MATH INVENTORY GRADE 7 VOYAGERS

Performance Level	Points per Test	# of Tests	Total Points
Exemplary 1180- ...	1000	-	-
Exceeds Standards 1106- 1179	750	1	750
Meets Standards 896 - 1105	500	10	5,000
Approaching 775-895	250	14	3,500
Academic Warning Em 400 -774	0	81	-
Totals		106	9,250
DCMS MATH API FALL 2014			
Assessments Performance Index =	87		

STUDENT MATH INVENTORY GRADE 6 SPARTANS

Performance Level	Points per Test	# of Tests	Total Points
Exemplary 1130- HIGHER	1000	-	-
Exceeds Standards 1001-1126	750	1	750
Meets Standards 811-1000	500	14	7,000
Approaching 705-810	250	8	2,000
Academic Warning EM400-704	0	94	-
Totals		117	9,750
DCMS MATH API FALL 2014			
Assessments Performance Index =	83		

STUDENT MATH INVENTORY GRADE 6 OLYMPIANS

Performance Level	Points per Test	# of Tests	Total Points
Exemplary 1130- HIGHER	1000	-	-
Exceeds Standards 1001-1126	750	1	750
Meets Standards 811-1000	500	14	7,000
Approaching 705-810	250	8	2,000
Academic Warning EM400-704	0	94	-
Totals		117	9,750
DCMS MATH API FALL 2014			
Assessments Performance Index =	83		

